

## Start Your Joint ALA-Chapter Membership

Join at [www.ala.org/groups/joint-membership-program](http://www.ala.org/groups/joint-membership-program)  
or call 800-545-2433, option 5.

The following Chapters (state library associations) allow students to join them and ALA for one low price of \$38, from now through August 31, 2017.

### Participating State Library Associations (Chapters):

- Alabama
- Alaska
- Arizona
- Arkansas
- California
- Connecticut
- Delaware
- District of Columbia
- Florida
- Georgia
- Hawaii
- Idaho
- Indiana
- Kansas
- Kentucky
- Louisiana
- Maine
- Maryland
- Massachusetts
- Michigan
- Minnesota
- Mississippi
- Missouri
- Montana
- Nevada
- New Jersey
- New York
- North Carolina
- Ohio
- Oklahoma
- Oregon
- Pennsylvania
- Rhode Island
- South Carolina
- South Dakota
- Tennessee
- Texas
- Vermont
- Washington
- Wisconsin

Save time and postage; join two  
great associations for one low price.

Join online at

[www.ala.org/groups/joint-membership-program](http://www.ala.org/groups/joint-membership-program)

MD-0917

# Joint Student Members are full members of both associations.

### Membership benefits include:

#### From ALA

- ALA Student Portal offering access to valuable information and student resources
- Access to ALA scholarships, grants, awards, and travel opportunities
- *Student ALDirect*, the e-newsletter specifically focused on news and information for students, delivered bi-monthly
- *ALDirect*, the industry leader for news affecting the future of the profession, delivered weekly via email
- *American Libraries*, the ALA magazine (a \$70 subscription included in dues), 6 issues
- Substantial discounts on ALA and Divisional Conferences and 10% members-only discounts on ALA publications and graphics

#### From FLA

- Access to our membership database, which includes features such as a member directory, committee spaces, and conversing with fellow members through the forums and circles features; a discount to our annual conference; access to our association-wide listserv; a free subscription to our quarterly *Florida Library Journal*; the opportunity to advocate for libraries at the state level.

[www.flalib.org](http://www.flalib.org)

**ALA** | American  
MEMBERSHIP | Library  
Association

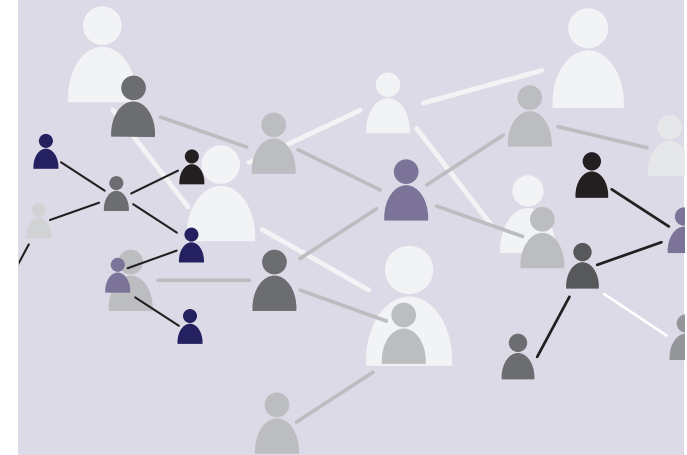
50 E. Huron St | Chicago, IL. 60611

[www.ala.org/membership](http://www.ala.org/membership)

SPECIAL MEMBERSHIP OFFER FROM  
**ALA and Florida Library Association**

## Joint Membership for Library and Information Science Students

**\$38.00**  
PER YEAR  
over a \$50  
value!



Join both your state and national library  
associations and get connected to your future.

Now you can join online at  
[www.ala.org/groups/joint-membership-program](http://www.ala.org/groups/joint-membership-program)

# About ALA

The American Library Association (ALA) works for students by advocating for increased library funding and the ongoing development of the profession. Through our accreditation program, ALA ensures that the training you receive will prepare you for your chosen career.

## Job Resources

ALA will help you with resources to find your first job and to remain competitive. ALA student members have access to the best network of career and professional development resources for library workers.

## Divisions and Round Tables

You need more than classwork to be fully prepared for your career. Joining ALA divisions and round tables is an excellent way to build experience in your specialty by meeting and working with longtime professionals. Student members can take advantage of ALA resources like résumé review services, job placement events, and car & home insurance.

To learn more about ALA and our divisions or round tables, visit [www.ala.org](http://www.ala.org) or call 1-800-645-2433, ext 5.



# About FLA

The Florida Library Association provides a wealth of resources for our student members. From scholarship possibilities and exclusive job postings to opportunities of networking and collaboration with librarians from across the state, FLA is here to enhance your academic career. Get involved with one of our many committees and/or member groups to learn more about librarianship while building your résumé with enriching experiences that will provide a huge benefit to your job search. If you take advantage of all that FLA has to offer, you can begin your career with confidence!

## FLA Interest Groups

FLA Member Groups provide a focus for the interaction of association members who share a common interest or activity related to the provision or support of library service. They allow for communication about topics related to the group's stated purpose by conducting meetings, workshops, or other events outside of our annual conference. Our member groups include a wide array of topics, such as: Academic Instruction and Information Literacy, Research Data, GLBT Library Services Support, Outreach and Programing, Youth Services and many more!

As a FLA member, you have the option of joining as many member groups as you have interests. This is a great opportunity to get involved and connect with fellow students and librarians from across the state.

## Joint Student Membership Application

Joint Student Members are eligible to join ALA divisions. If you have special interests, consider joining a division. See special student rates below:

### Divisional Dues

American Association of School Librarians (AASL)	\$35
Assoc. of College and Research Libraries (ACRL)	\$41
Assoc. for Library Collections & Technical Services (ALCTS)	\$15
Assoc. for Library Service to Children (ALSC)	\$20
Assoc. of Specialized and Coop. Library Agencies (ASCLA)	\$20
Library Leadership and Management Association (LLAMA)	\$15
Library and Information Technology Assoc. (LITA)	\$25
Public Library Association (PLA)	\$32
Reference and User Services Association (RUSA)	\$25
United for Libraries (UL)	\$20
Young Adult Library Services Association (YALSA)	\$25

### Round Table Dues

Joint Student Members are also eligible to join any of the ALA round tables. The following have special rates for student membership. Please visit [www.ala.org/groups/rts](http://www.ala.org/groups/rts) for a complete list.

Ethnic and Multicultural Information Exchange (EMIERT)	\$10
Federal and Armed Forces Librarians (FAFLRT)	FREE
Gaming (GAMERT)	\$10
Gay, Lesbian, Bisexual and Transgendered (GLBTRT)	\$5
Government Documents (GODORT)	\$10
Intellectual Freedom (IFRT)	\$5
International Relations (IRRT)	\$5
Library History (LHRT)	\$5
Library Research (LRRT)	\$15
Doctoral students	FREE
Map and Geospatial Information (MAGIRT)	\$10
New Members (10-year limit) (NMRT)	\$10
Social Responsibilities (SRRT)	FREE
Sustainability (SustainRT)	\$10
Video (VRT)	FREE

Save time and postage; join two great associations for one low price.

Join online at

[www.ala.org/groups/joint-membership-program](http://www.ala.org/groups/joint-membership-program)